



For the future

HOFEKA Electrical Industrial and Trading Ltd.
H-2142 Nagytarcsa, Cinkotai út 23.
Phone: +36-(1) 261-6338, 36-(1)-261-6505,
+36-(1)-262-3034, +36 28 920-600
E-mail: hofeka@hofeka.hu • www.hofeka.hu

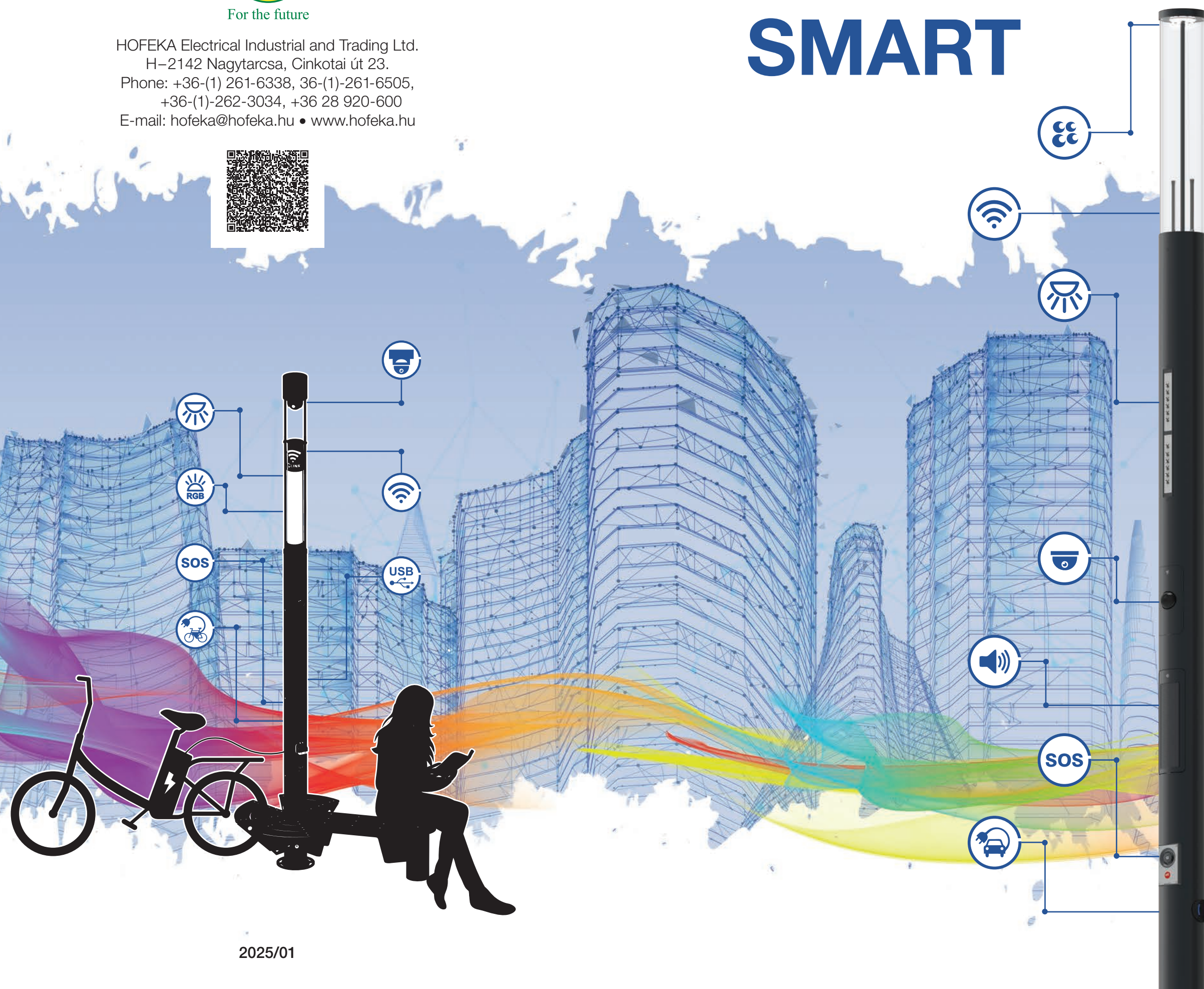


KORINTOSZ SMART

MINI

MIDI

MAXI



2025/01



For the future

OUR COMPANY

HOFEKA Kft., a successor of EKA Rt. (the Hungarian abbreviation for Electrical Appliances and Materials Manufacturing), established in 1888, has gained widespread recognition and popularity in Hungary, Europe as well as the Middle East. Our company has three facilities: our R&D and logistics departments are located in Nagytarcsa, next to Budapest, and our two manufacturing plants are in Dióskál, close to Austria. We pride ourselves in being in the forefront of our industry and offering creative and innovative solutions to the complex problems our clients are facing. Our extended logistics facilities allow us to provide a consistent supply of street lighting poles, brackets, and anchoring plates to our customers.

HOFEKA offers:

- LED luminaires
 - festive lighting and street lighting equipment
 - floodlights for outdoor, sports and industrial uses
 - tailor-made light fixtures
 - accessories and decorative products
 - standard and tailor-made poles
 - decorative street furniture
 - Smart City solutions
 - Assistance services
-
- high-voltage transmission line fittings (exclusive manufacturing in Hungary)
 - fittings of overhead power lines and transmission towers
 - specialized high-voltage (750 kV) fittings

More on our main product lines:

100% of Hungary's high-voltage electrical grid has been installed using fittings from EKA Rt., the predecessor of HOFEKA. HOFEKA manufactures replacement fittings and additional fittings for the power generation industry, working closely with electricity providers.

HOFEKA manufactures the highest technical and aesthetic quality lighting equipment on the market, using the best quality raw materials, sourced from the most reputable vendors in Europe. Our lighting equipment, designed and manufactured jointly with ECLATEC, have received several prestigious professional awards.

In the field of decorative lighting we illuminate buildings, sports facilities, and outdoor structures in an aesthetic way with our programmable RGB(W) LED devices.

Our Smart City solutions greatly contribute to the modern and cost-efficient operation of municipalities. These solutions include programmable light fixtures, parking assistance systems, waste management, charging electric cars, e-bikes, and other devices; environmental sensors, wireless internet, and integrated surveillance systems.

Our state of the art production plant is equipped with all equipment and machinery to produce our products in-house, allowing us to fulfill orders with great flexibility and short deadlines.

HOFEKA works in compliance with the guidelines of ISO 9001 and we are a certified supplier of several large local and global companies.

Please do not hesitate to contact us if you have any questions related to our products and services.

Sincerely,



Péter Hoffman
Managing director & Company owner





What is HOFEKA ASSISTANCE?

This type of service is well-known in the automotive industry. HOFEKA ASSISTANCE is first in the lighting industry to offer technical assistance. With dedicated industry professionals and service vehicles, HOFEKA ASSISTANCE is here to help our clients from lighting design through product design to installation.

Who can benefit from HOFEKA ASSISTANCE?

We offer help and services to:

- developers
- designers
- contractors
- operators

How HOFEKA ASSISTANCE works

HOFEKA ASSISTANCE’s professionals help our clients in any phase of the implementation. Our dedicated service team ensures timely response to all service calls and our warehouse always has sufficient spare parts in stock to meet our client’s needs quickly and efficiently.

For designers

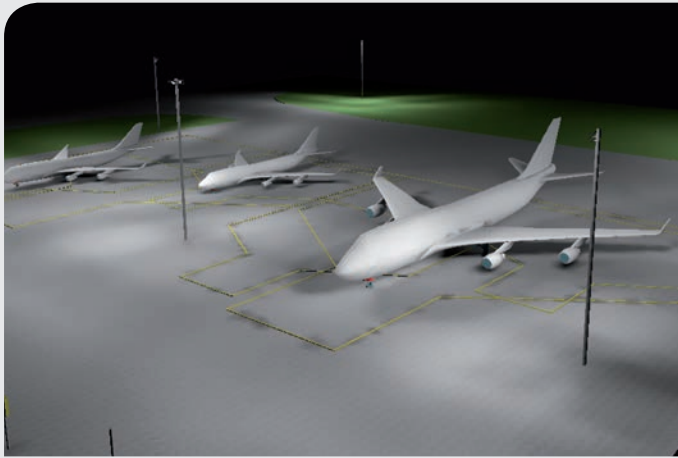
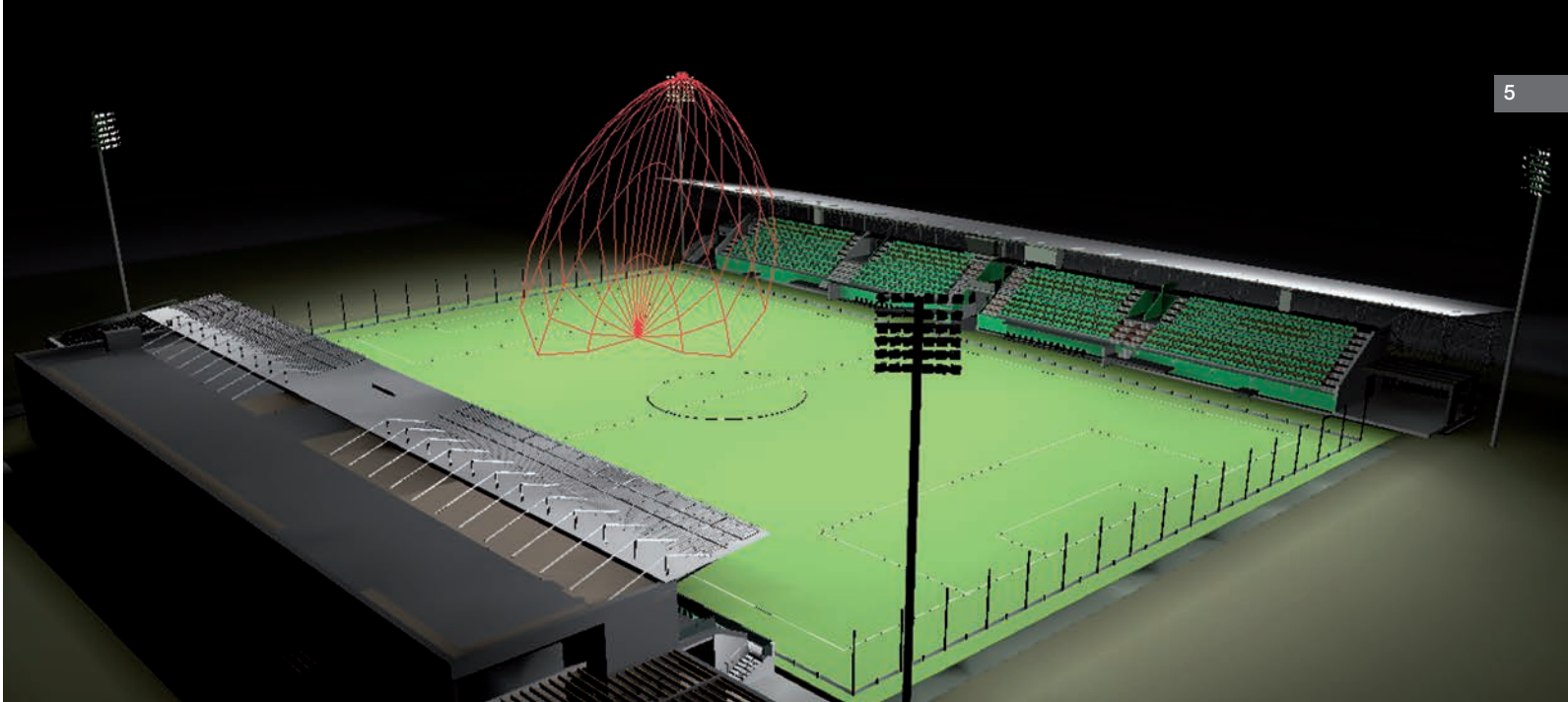
HOFEKA ASSISTANCE facilitates designers’ work by taking over the design of complete lighting plans with our own design software and products, based on the design requirements and specifications and finding the best and most energy-efficient solution. During the design phase, developers may come up with aesthetic and technical requirements for light fixtures that designers cannot meet using any of the products currently on the market. We are here to help designers to find the solution for even the most challenging requirements with our professional development team. Customer satisfaction is our main objective and we work with leading electrical design specialists, interior designers and in some cases, industrial designers to fulfill all client requests.

For contractors

For the implementation phase we provide constant manufacturer presence, helping contractors with a professional and quick installation. Our professionals offer final review to detect and fix any technical issues prior to handover. Our HOFEKA ASSISTANCE vehicle is always just a phone call away.

For developers and operators

Professionally manufactured and installed lighting devices are less likely to fail. Replacement of parts under and beyond warranty are guaranteed for decades. HOFEKA ASSISTANCE provides comprehensive technical assistance for design, construction, and handover, resulting in significant reduction in operating and maintenance costs.



KORINTOSZ SMART SOLUTION

Innovative development. A solution for the future.
Numerous functions and opportunities.
Energy efficiency. All in one single street pole
in order to improve the quality of city life.

With this smart pole, not only do we save great amount of energy, but it also serves as a charging station for electric cars. The built-in Wi-Fi router provides constant communication opportunities and continuous flow of information enabling internet usage for several hundred users within a 200-metre radius. In addition, it significantly improves the security of the streets, as it is equipped with an emergency call button and a surveillance camera. Thanks to its modular build-up, the smart pole can be customized, the scope of its functions can be further extended.

A safe and pleasant environment is highly ensured not only by these functions, but also by the appearance of the pole. Its colour can be selected without restrictions, it shapes the cityscape, full protection is available against corrosion and posters with the special "anti-poster" protective coating that makes impossible to stick a poster on the pole.

-  NEMA or Zhaga socket
-  PTZ/Dome surveillance camera
-  Ambient sensors
-  LED light source
-  Bowl decorating shield
-  Floodlight
-  Wi-Fi/GSM communication unit
-  Integrated surveillance camera
-  RGB flashlight, decorative lighting
-  Loudspeaker
-  USB charger
-  Socket for e-bike or e-wheelchair
-  Charger for electric cars
-  SOS Emergency IP Phone
-  P Bike storage
-  Street furniture



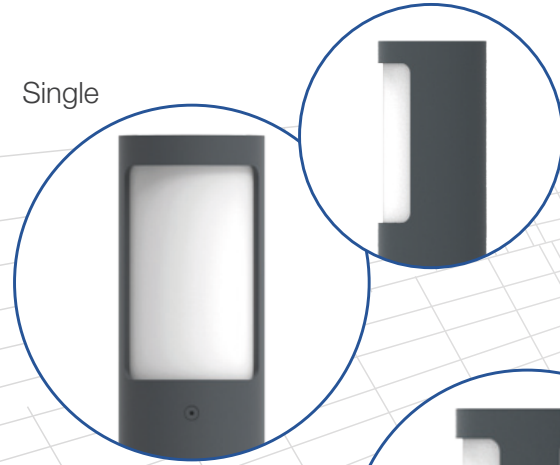
APPLICATIONS

- Mounting: concrete base and anchor bolt required
- Cycle paths, parks, squares and promenades
- Recommended heights: 0,4-1 m

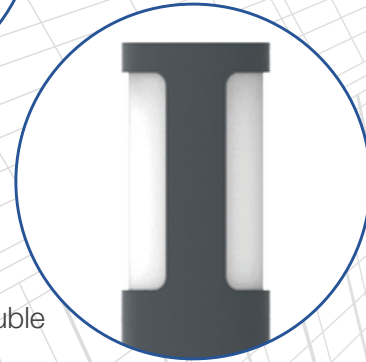
DESCRIPTION

- Cylindrical opal bowl
- Aluminium (Ø 110 mm) pole
- IP 66
- IK 08
- Electrical safety class: I.
- Any RAL fine structure colour available
- Colour temperature: 2.700 K, 3.000 K or 4.000 K

Single



Double



2 m
Sidewall

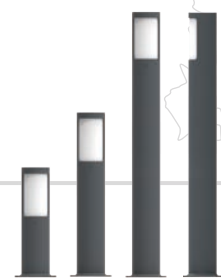
2 m

1 m

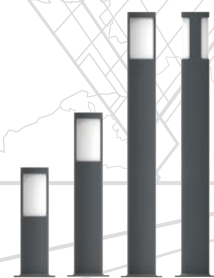
0,6 m

0,4 m

0,2 m



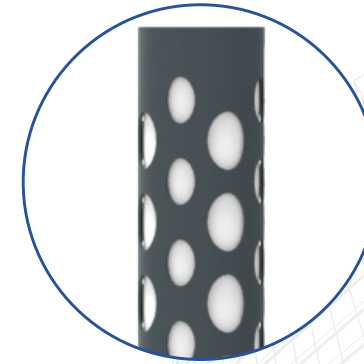
Single



Double



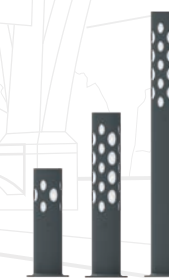
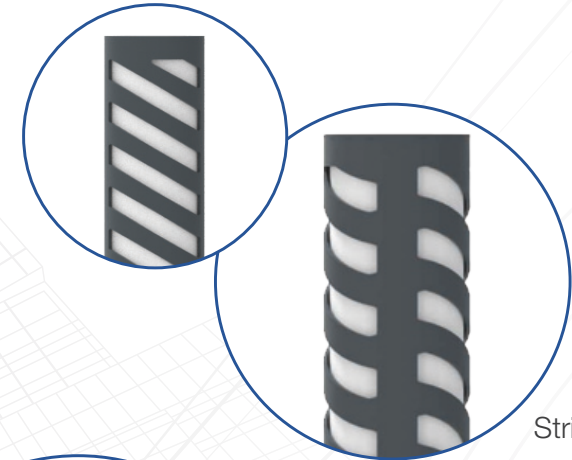
Iona



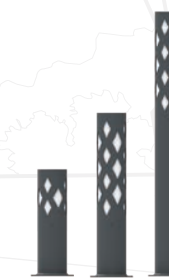
Romb



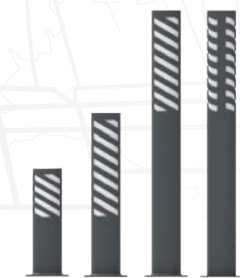
Strip



Iona



Romb



Strip

1 m

0,6 m

0,4 m

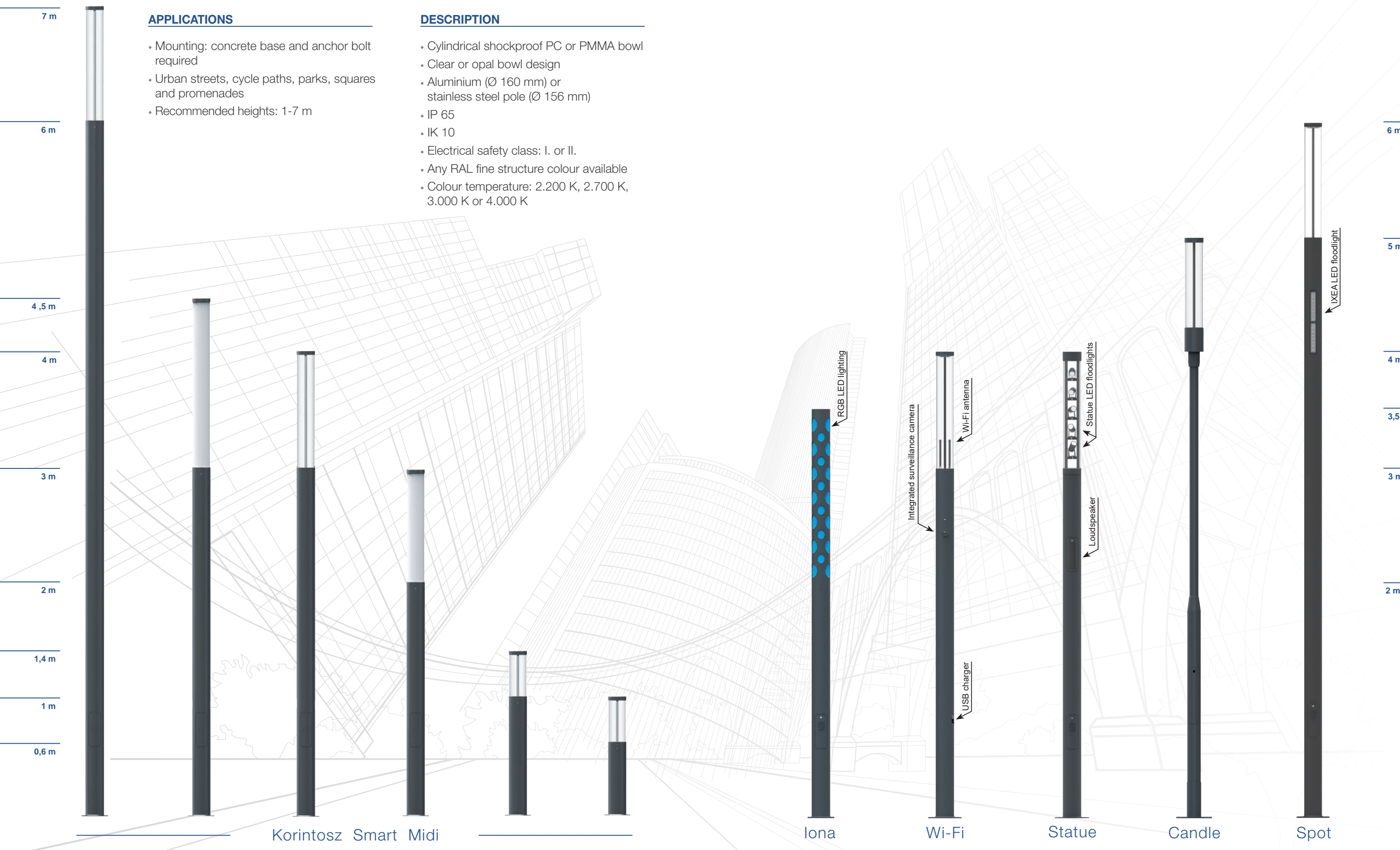
0,2 m

APPLICATIONS

- Mounting: concrete base and anchor bolt required
- Urban streets, cycle paths, parks, squares and promenades
- Recommended heights: 1-7 m

DESCRIPTION

- Cylindrical shockproof PC or PMMA bowl
- Clear or opal bowl design
- Aluminium (Ø 160 mm) or stainless steel pole (Ø 156 mm)
- IP 65
- IK 10
- Electrical safety class: I. or II.
- Any RAL fine structure colour available
- Colour temperature: 2.200 K, 2.700 K, 3.000 K or 4.000 K

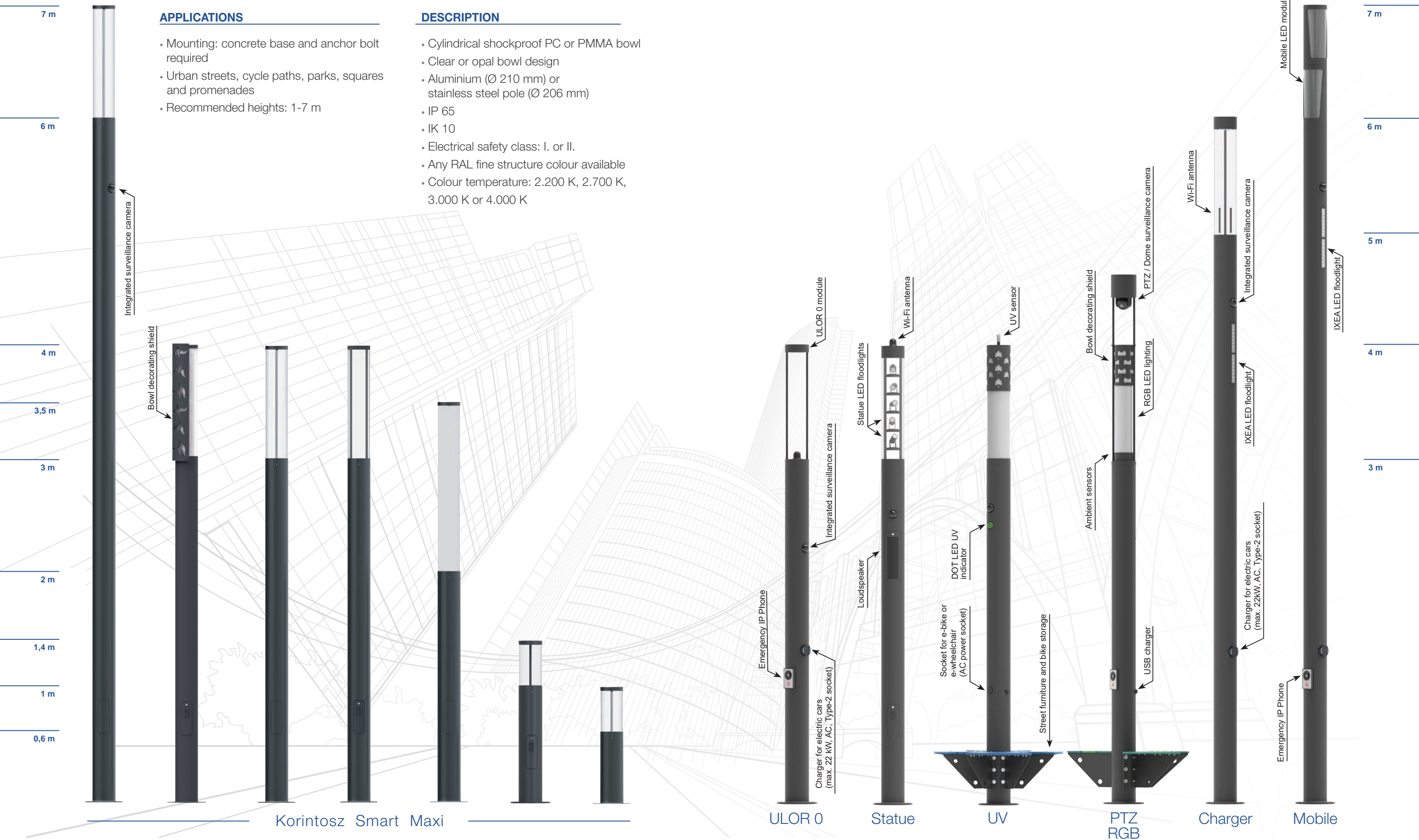


APPLICATIONS

- Mounting: concrete base and anchor bolt required
- Urban streets, cycle paths, parks, squares and promenades
- Recommended heights: 1-7 m

DESCRIPTION

- Cylindrical shockproof PC or PMMA bowl
- Clear or opal bowl design
- Aluminium (Ø 210 mm) or stainless steel pole (Ø 206 mm)
- IP 65
- IK 10
- Electrical safety class: I. or II.
- Any RAL fine structure colour available
- Colour temperature: 2.200 K, 2.700 K, 3.000 K or 4.000 K





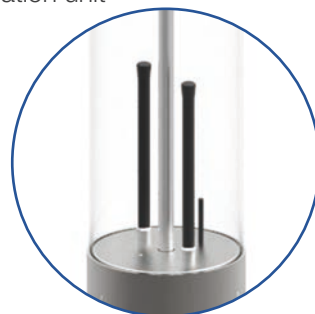
LED light source

- colour temperature: 2.200 K - 4.000 K
- optional light distributions
- DALI control
- Zhaga socket



Wi-Fi / GSM communication unit

- GSM, UTP or fiber optic



Integrated surveillance camera

- IP camera
- PoE power supply
- IP 67



IXEA LED floodlight

- colour temperature: 3.000 K or 4.000 K
- optional lighting solutions
- DALI control



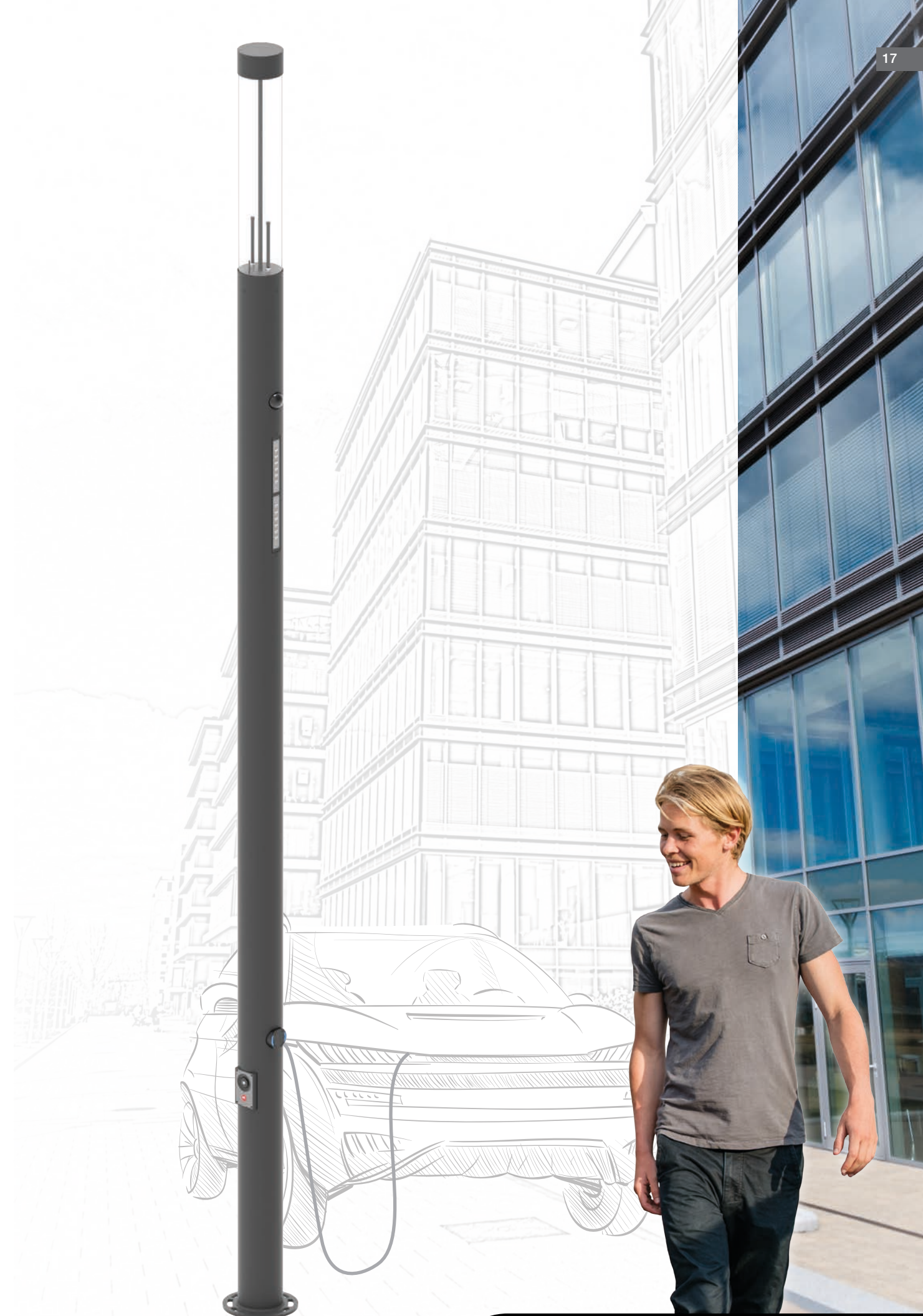
Emergency IP Phone

- safe and fast help request
- vandal-resistant VoIP module
- HD sound quality
- PoE power supply

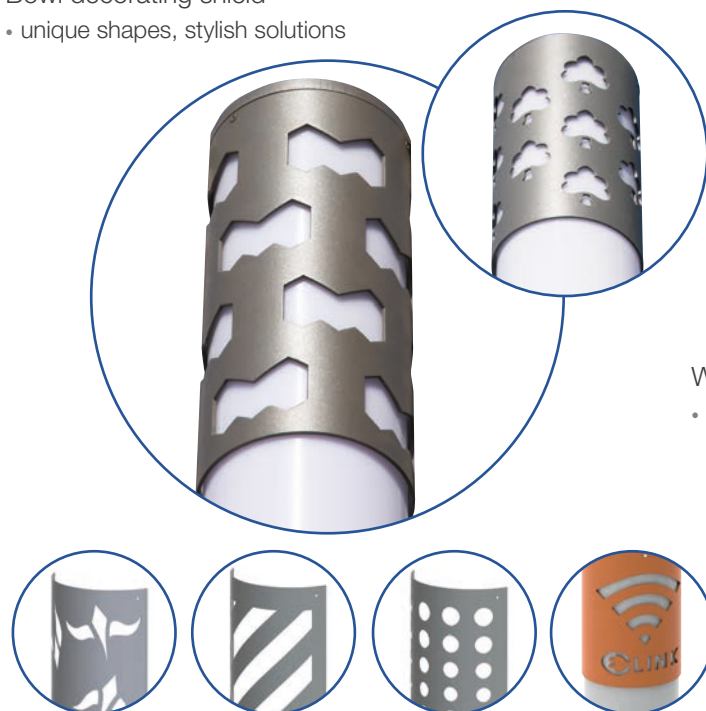


Charger for electric cars

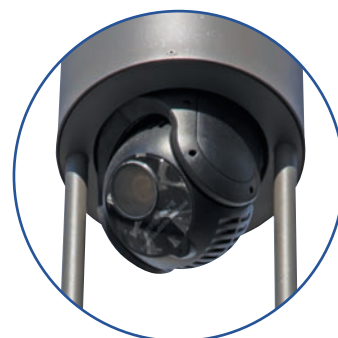
- max. 22 kW, AC
- Type-2 socket



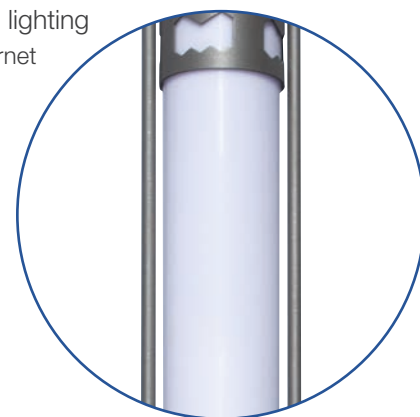
Bowl decorating shield
• unique shapes, stylish solutions



PTZ / Dome surveillance camera
• 360° movement range
• IP camera
• PoE power supply
• IP 66



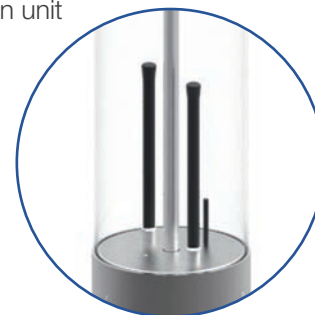
White or RGB LED lighting
• DALI, DMX or Ethernet control



Ambient sensors
• real-time data
(CO, NO_x, O₃, SO₂, PM_{2.5}, PM₁₀, temperature, humidity, etc.)



Wi-Fi / GSM communication unit
• GSM, UTP or fiber optic



Emergency IP Phone
• safe and fast help request
• vandal-resistant VoIP module
• HD sound quality
• PoE power supply



USB charger
• for smart devices



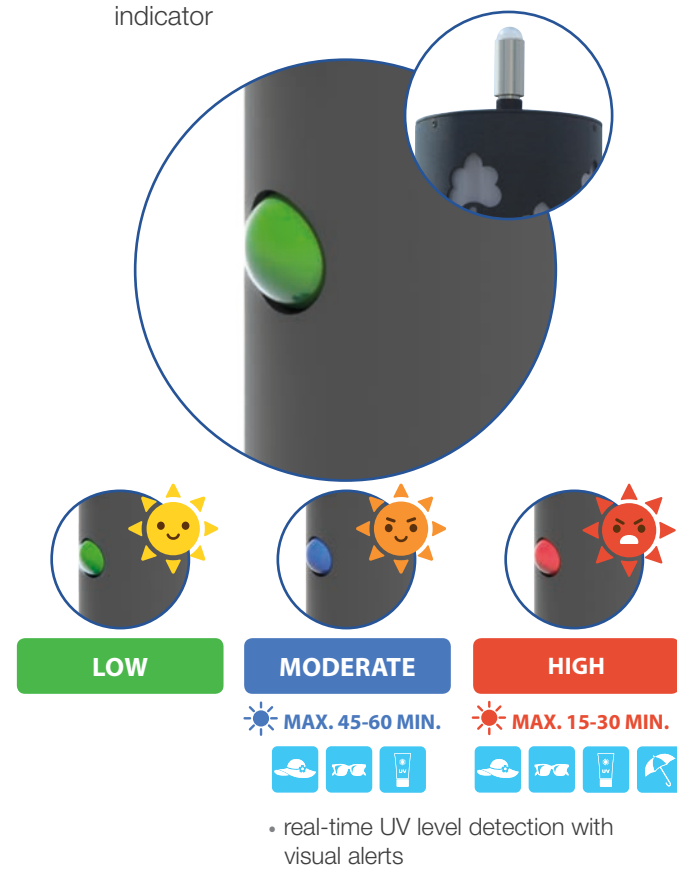
Street furniture and bicycle storage
• comfort and safety



Bowl decorating shield
• unique shapes, stylish solutions



UV sensor with colored LED feedback indicator



Socket for e-bike or e-wheelchair

- AC power socket
- e-Scooter and Segway charging
- Charger for electric cars (single-phase)



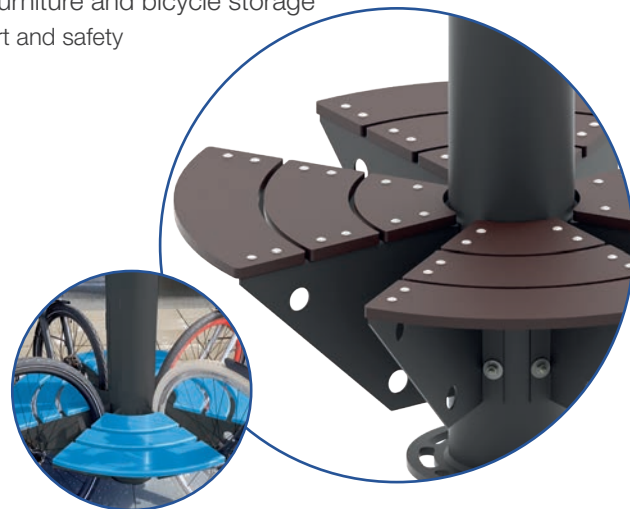
Integrated surveillance camera

- IP camera
- PoE power supply
- IP 67



Street furniture and bicycle storage

- comfort and safety



USB charger

- for smart devices



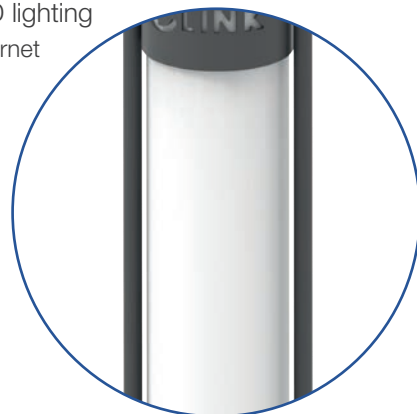
PTZ / Dome surveillance camera

- 360° movement range
- IP camera
- PoE power supply
- IP 66



White or RGB LED lighting

- DALI, DMX or Ethernet control



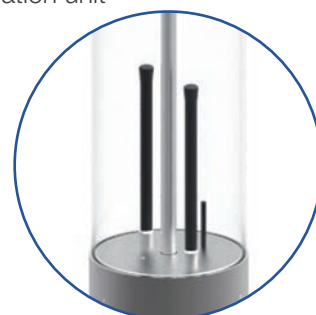
Ambient sensors

- real-time data (CO, NO_x, O₃, SO₂, PM_{2.5}, PM₁₀, temperature, humidity, etc.)



Wi-Fi / GSM communication unit

- GSM, UTP or fiber optic



Integrated surveillance camera

- IP camera
- PoE power supply
- IP 67



Socket for e-bike or e-wheelchair

- AC power socket
- e-Scooter and Segway charging
- Charger for electric cars (single-phase)



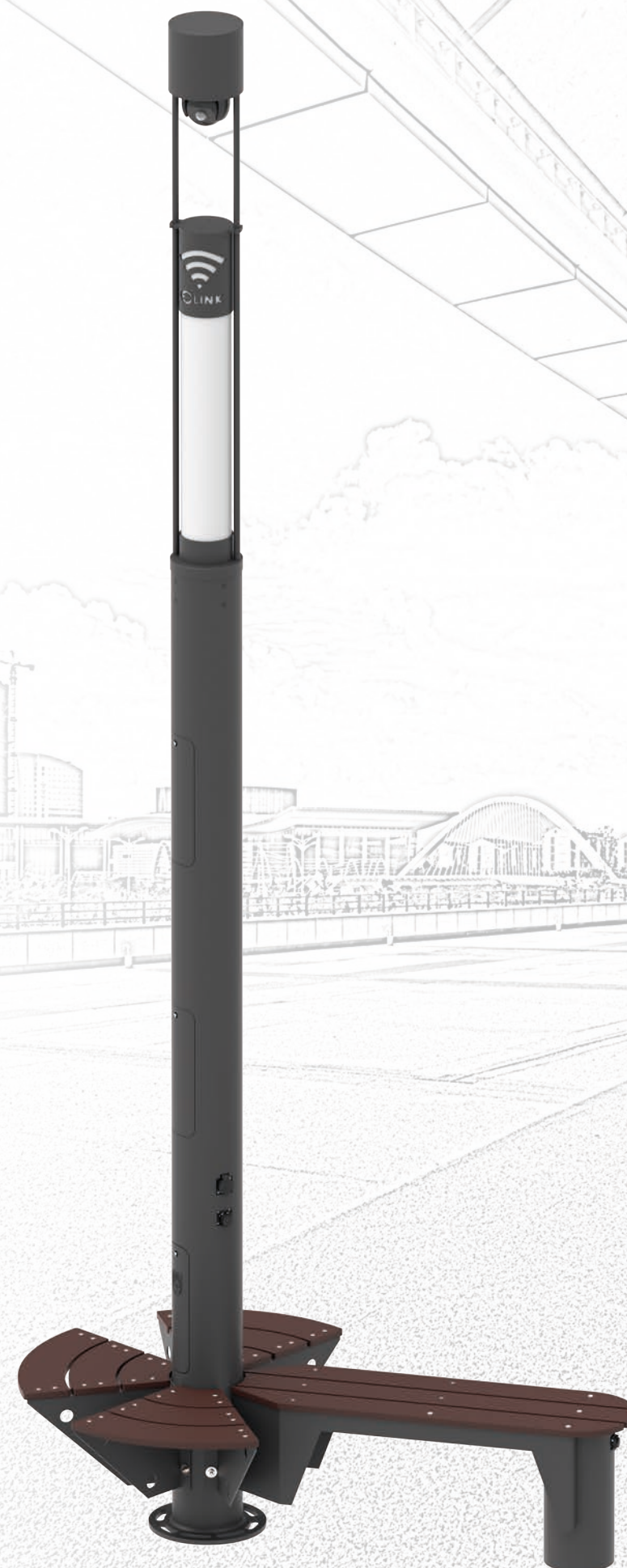
Street furniture and bicycle storage

- comfort and safety



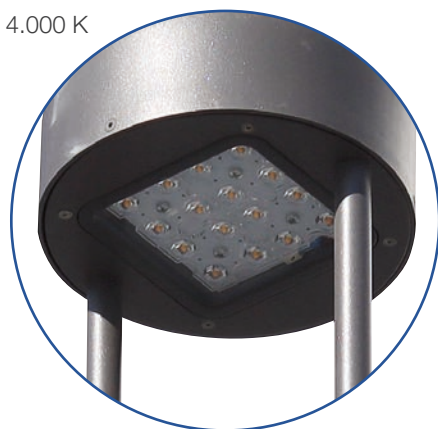
USB charger

- for smart devices



ULOR0 LED module

- light pollution free solution
- colour temperature: 2.200 K - 4.000 K
- optional light distributions
- DALI control
- Zhaga socket



Wi-Fi / GSM communication unit

- GSM, UTP or fiber optic



Integrated surveillance camera

- IP camera
- PoE power supply
- IP 67



Charger for electric cars

- max. 22 kW, AC
- Type-2 socket



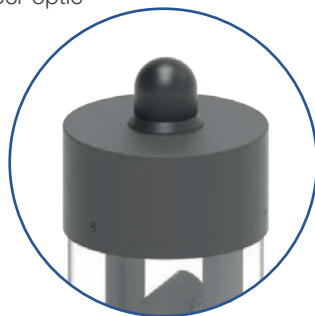
Emergency IP Phone

- safe and fast help request
- vandal-resistant VoIP module
- HD sound quality
- PoE power supply



Wi-Fi / GSM communication unit

- GSM, UTP or fiber optic



Statue LED floodlights

- illuminating for sculptures, monuments or building facades
- colour temperature: 2.700 K - 4.000 K
- optional light distributions



Ambient sensors

- real-time data (CO, NO_x, O₃, SO₂, PM_{2,5}, PM₁₀, temperature, humidity, etc.)



Integrated surveillance camera

- IP camera
- PoE power supply
- IP 67



Loudspeaker

- IP device
- HD sound quality
- optional RAL colours
- PoE power supply



Statue LED floodlights

- illuminating for sculptures, monuments or building facades
- colour temperature: 2.700 K - 4.000 K
- optional light distributions



Modular Mobile LED modules

- colour temperature: 2.200 K - 4.000 K
- optional light distributions
- DALI control
- Zhaga socket



Integrated surveillance camera

- IP camera
- PoE power supply
- IP 67



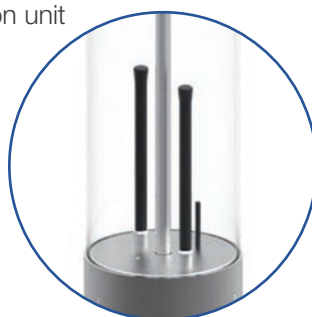
IXEA LED floodlight

- colour temperature: 3.000 K or 4.000 K
- optional lighting solutions
- DALI control



Wi-Fi / GSM communication unit

- GSM, UTP or fiber optic



Charger for electric cars

- max. 22 kW, AC
- Type-2 socket



Emergency IP Phone

- safe and fast help request
- vandal-resistant VoIP module
- HD sound quality
- PoE power supply



XEON LED

- colour temperature: 2.200 K - 4.000 K
- optional light distributions
- DALI control
- Zhaga socket



XEON PTZ / Dome surveillance camera

- 360° movement range
- IP camera
- PoE power supply
- IP 66



Socket for e-bike or e-wheelchair

- AC power socket
- e-Scooter and Segway charging
- Charger for electric cars (single-phase)



Emergency IP Phone

- safe and fast help request
- vandal-resistant VoIP module
- HD sound quality
- PoE power supply



Street furniture and bicycle storage

- comfort and safety



USB charger

- for smart devices



KILINDA LED

- colour temperature: 2.200 K - 4.000 K
- optional light distributions
- DALI control
- Zhaga socket



Integrated surveillance camera

- IP camera
- PoE power supply
- IP 67



Wi-Fi / GSM communication unit

- GSM, UTP or fiber optic



Emergency IP Phone

- safe and fast help request
- vandal-resistant VoIP module
- HD sound quality
- PoE power supply



Street furniture and bicycle storage

- comfort and safety



KORINTOSZ SMART	MAXI	MIDI, MAXI	MAXI	MAXI	MAXI	MAXI
OPTIONAL SMART DEVICES						
	Street furniture and bicycle storage	USB charger	Socket for e-bike or e-wheelchair	Emergency IP Phone	Charger for electric cars (max. 22kW, AC, Type-2 socket)	Loudspeaker
Street furniture and bicycle storage ³		✓	✓	✓	—	✓
USB charger	✓		✓	✓	—	✓
Socket for e-bike or e-wheelchair ³	✓	✓		✓	—	✓
Emergency IP Phone ³	✓	✓	✓		✓	✓
Charger for electric cars ³ (max. 22kW, AC, Type-2 socket)	—	—	—	✓		—
Loudspeaker ³	✓	✓	✓	✓	—	
Ambient sensors	✓	✓	✓	✓	✓	✓ ¹
Integrated surveillance camera	✓	✓	✓	✓	✓	✓ ¹
IXEA LED floodlight ³	✓	✓	✓	✓	✓	✓ ¹
UV sensor with colored LED feedback indicator	✓	✓	✓	✓	✓	✓
Wi-Fi / GSM communication unit	✓	✓	✓	✓	✓	✓
PTZ / Dome surveillance camera	✓	✓	✓	✓	✓	✓
Bowl decorating shield	✓	✓	✓	✓	✓	✓

1 When smart devices are placed together the quantity and position must be taken into account.
2 External Wi-Fi antenna is recommended.
3 Only available with aluminum pole.

Some designs and optional combinations are only available with aluminum pole.
In each particular case it is necessary to specify the smart devices and design solutions to be installed.

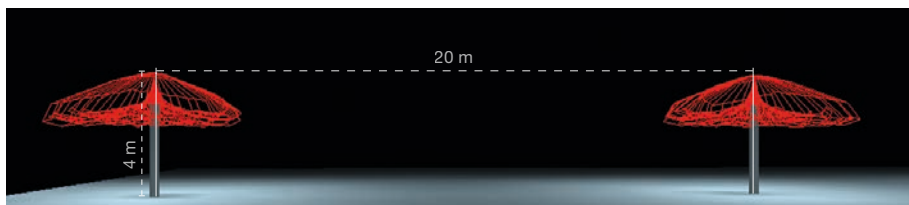
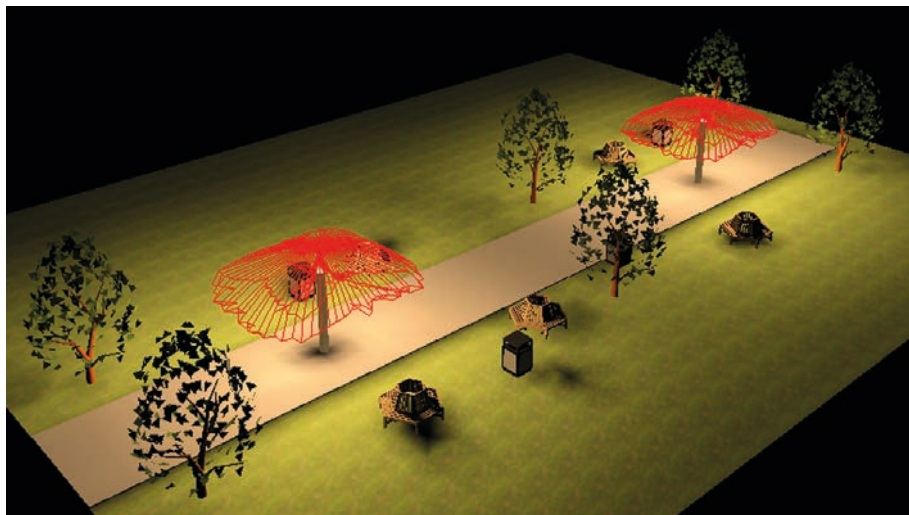
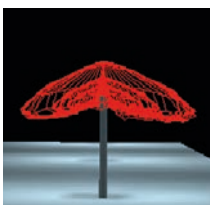
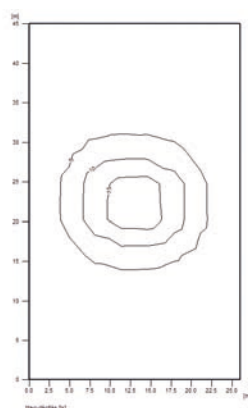
MIDI, MAXI	MIDI, MAXI	MAXI	MIDI, MAXI	MIDI, MAXI	MAXI	MAXI
						
Ambient sensors	Integrated surveillance camera	IXEA LED floodlight	UV sensor with colored LED feedback indicator	Wi-Fi / GSM communication unit	PTZ / Dome surveillance camera	Bowl decorating shield
✓	✓	✓	✓	✓	✓	✓
✓	✓	✓	✓	✓	✓	✓
✓	✓	✓	✓	✓	✓	✓
✓	✓	✓	✓	✓	✓	✓
✓	✓	✓	✓	✓	✓	✓
✓	✓	✓	✓	✓	✓	✓
✓ ¹	✓ ¹	✓ ¹	✓	✓	✓	✓
	✓ ¹	✓ ¹	✓	✓	✓	✓
✓ ¹		—	✓	✓	✓	✓
✓ ¹	—		—	✓	✓	✓
✓	✓	✓		✓	✓	✓
✓	✓	✓	✓		✓	✓ ²
✓	✓	✓	✓	✓		✓
✓	✓	✓	✓	✓ ²	✓	



SYMMETRICAL LIGHT DISTRIBUTION – Opal, ParkLED, or T5 optic

It is recommended to use symmetrical optics if the luminaire is located in the middle of the area to be illuminated (e.g. in parks, car parks, etc.).

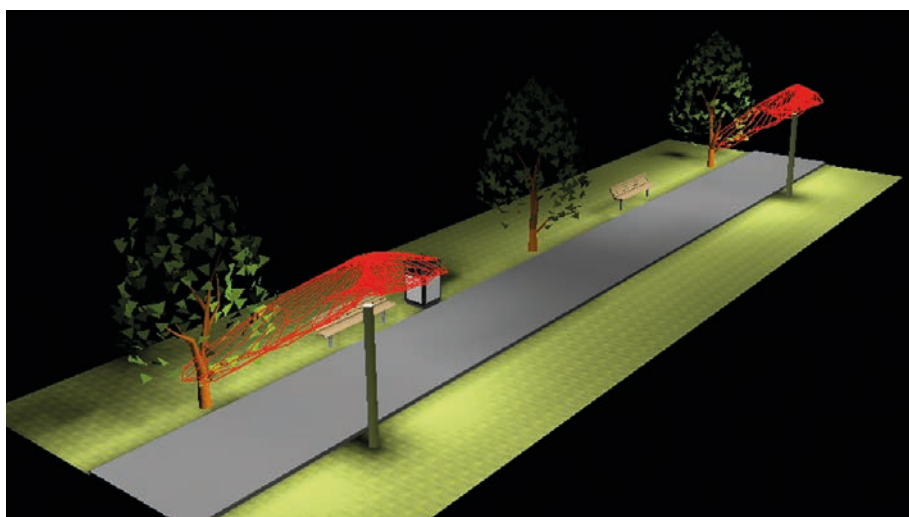
Recommended heights: 4 meters • Distance: 20 meters • Requirements: P2 • Glare: up to G5 • Colour temperature: 3.000 K



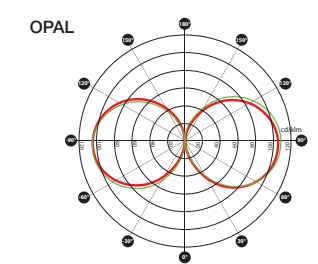
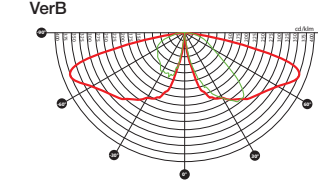
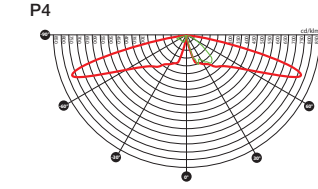
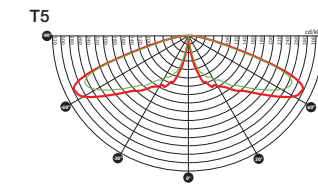
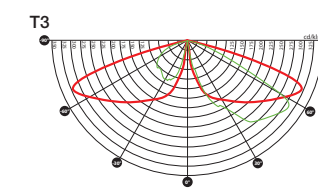
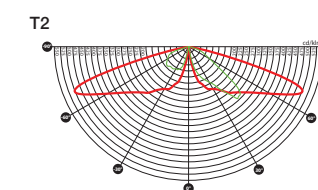
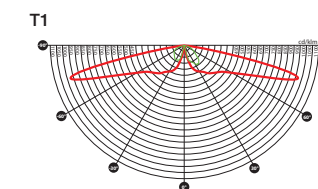
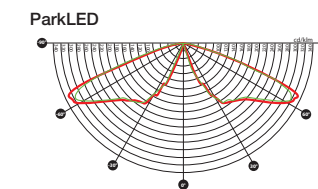
ASYMMETRICAL LIGHT DISTRIBUTION – ERS, ERL, ETS, ERE, LRS, LRL, PFA, T1, T2, T3, P4, R3, M5, M6 or VerB optic

Asymmetrical optics should be used where the luminaire is located at the edge of the area to be illuminated, thus taking advantage of the asymmetrical light distribution, the section can be illuminated from the side (e.g. roads, streets, cycle paths, walkways, etc.).

Recommended heights: 4 meters • Distance: 21 meters • Requirements: P1 • Glare: up to G5 • Colour temperature: 4.000 K



		KORINTOSZ SMART		
		MINI	MIDI	MAXI
Applications		parks, pedestrian areas, cycle paths, residential areas, squares lighting	roads, parks, pedestrian areas, cycle paths, residential areas, squares lighting	
Recommended heights		0,6 or 1 m	1, 3, 4 or 7 m	
Mounting		concrete base and anchor bolt required		
Dimensions	Height	0,4 – 1 m	1– 7 m	
	Ø	110 mm	156 – 160 mm	206 – 210 mm
Pole		Aluminium pole	Aluminium or stainless steel pole	
Bowl	Material	PMMA	PC or PMMA	
	Transparency	opal	clear or opal	
	Height	0,2 – 0,4 m	0,4 – 1,5 m	
Weight (lighting head)		3 – 15 kg	5 – 18 kg	6 – 25 kg
Protection (lighting head)		IP 65		
Street lighting	Optics (clear bowl)	—	ParkLED	T1, T2, T3, T5, P4, R3, M5, M6 or VerB
	Colour temperature	2.700 K, 3.000 K or 4.000 K	2.200 K, 2.700 K, 3.000 K or 4.000 K	
	Pmax	max. 20 W (depends on the design)	max. 55 W	
Mobile LED module	Optics	—	—	T1, T2, T3, T5, P4, R3, M5, M6 or VerB
	Colour temperature	—	—	2.200 K, 2.700 K, 3.000 K or 4.000 K
	Pmax	—	—	max. 37 W / module
Statue LED floodlight	Optics	—	20° or 30°	32° or 50°
	Colour temperature	—	2.700 K, 3.000 K or 4.000 K	
	Pmax	—	7,5 W / floodlight	16 W / floodlight
IXEA LED floodlight	Optics	—	—	EPI, EPV
	Colour temperature	—	—	3.000 K or 4.000 K
	Pmax	—	—	max. 33 W / IXEA module
Control (optionally)		—	DALI, DMX, Line Dimming, Clock dimming, Analog dimming (0 – 10 V) or Step dimming / Line switch	
Rated voltage		230 – 240 V, 50 Hz		
Protection		—	surge, overcurrent and driver overheating protection	
Smart City socket		—	NEMA or Zhaga socket	
PTZ / Dome surveillance camera		—	—	360 movement range IP camera, PoE power supply, IP 67
Integrated surveillance camera		—	IP camera, PoE power supply, IP 67	
Wi-Fi / GSM communication unit		—	LTE, 4G, GSM and UTP, fiber optic (optionally) PoE power supply (optionally)	
UV sensor with colored LED feedback indicator		—	Real-time UV level detection with visual alerts	
Loudspeaker		—	IP device, HD sound quality, optional RAL colours, PoE power supply	
Ambient sensors		—	CO, NO _x , O ₃ , SO ₂ , PM _{2,5} , PM ₁₀ , temperature, humidity, etc. PoE power supply (optionally)	
Charger for electric cars		—	—	max. 22kW, AC, Type-2 socket
Socket for e-bike or e-wheelchair		—	—	AC power socket
USB charger		—	USB-A connector (optional USB-C)	
Emergency IP Phone		—	—	safe and fast help request vandal-resistant VoIP module HD sound quality, PoE power supply
Anchor bolt	Type	HOV - mini	HOV - midi	HOV - 1
	Length	300 mm	300 or 600 mm	600 mm
	Hole distance	M12 / 120 mm x 120 mm	M16 / 160 mm x 160 mm	M20 / 200 mm x 200 mm
	Fasteners	Hot-dip galvanized fasteners with stainless steel closed nut		





Győr



Budapest



Nagykovácsi



Budapest



Győr



Budapest



Gödöllő



Gödöllő



Budapest



Budapest



Budapest



Kisbér



Budapest

Communication department HOFEKA - edition 01/2025.
Website: www.hofeka.hu
E-mail: hofeka@hofeka.hu
This document may not be reproduced without the previous
written permission of HOFEKA - Copyright HOFEKA 2021.
Document and photographs not contractual. Equipment descriptions
and dimensions are given for reference only and shall not constitute any
undertaking on the part of our Company. Document subject to modifications
without notice.

