



# JUPITER





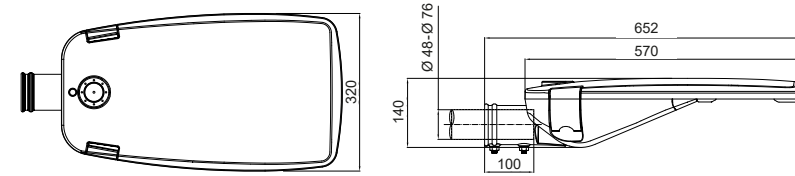
**JUPITER S MIDI**



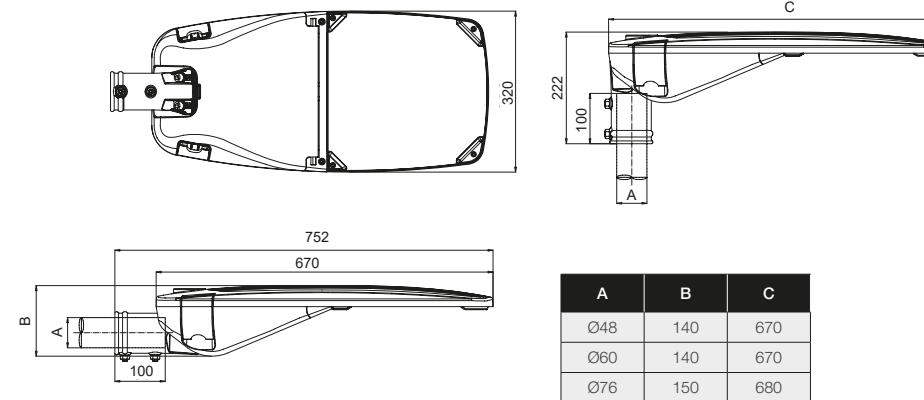
**JUPITER S**



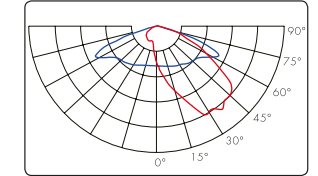
JUPITER S MIDI



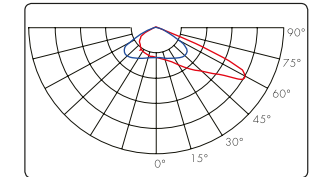
JUPITER S



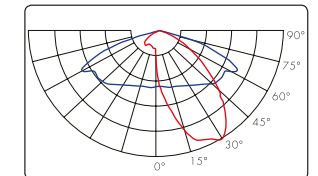
**M1**



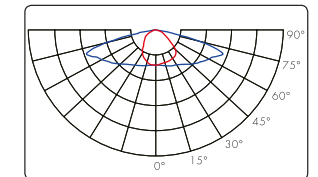
**M6**



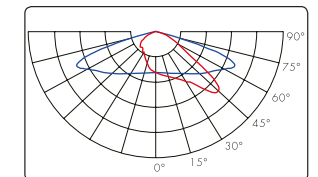
**R3**



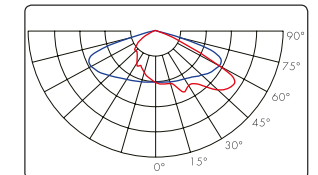
**TYPE I**



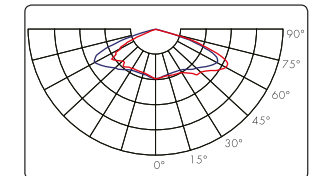
**TYPE II**



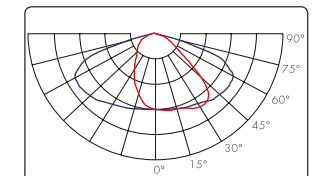
**TYPE III**



**TYPE V**



**VB**



**APPLICATIONS**

- Mounting: top and side entry
- Pedestrian areas, cycle paths, residential areas, street lighting
- Recommended height: 4-16 m

**DESCRIPTION**

- Injection die-cast aluminium body
- Luminaire available in 2 sizes: JUPITER S MIDI and JUPITER S
- Luminaire cover can be opened without tools
- Gear tray can be replaced without tools
- Bowl in thermally tempered glass
- IP 66
- IK 09
- ULR<1%
- Optic: **Type lenses**
- Class I or II
- Polyester powder coating, any RAL colour
- Colour temperature: 3.000 K, 4.000 K or 5.000 K

**THE LUMINAIRE COVER CAN BE OPENED WITHOUT TOOLS**



**WATERPROOFING**

- IP 66 waterproofing in accordance with the standard EN 60 529
- Extruded silicone gasket
- Breathing system with activated carbon filter
- Cable gland with anchoring device

**MECHANICAL INTERFACES**

- Top rotating arm built into the luminaire  
Top or side: Ø 48 mm, Ø 60 mm or Ø 76 mm
- Tilts:  
Top: 0°, +5°, +10°, +15°  
Side: -15°, -10°, -5°, 0°, +5°, +10°, +15°



Post top



Side entry



Ø 48 mm



Ø 60 mm



Ø 76 mm

	JUPITER S MIDI	JUPITER S
<b>Applications</b>	pedestrian areas, cycle paths, residential areas, street lighting	
<b>Recommended heights</b>	4-12 m	4-16 m
<b>Mounting</b>	top and side entry	
<b>Dimensions</b>	<b>Length</b> 652 mm	<b>Length</b> 752 mm
	<b>Width</b> 320 mm	<b>Width</b> 320 mm
<b>Weight</b>	7,5 kg	9 kg
<b>Windage area</b>	0,04 m <sup>2</sup>	0,045 m <sup>2</sup>
<b>Optics</b>	M1, M6, R3, Type I, Type II, Type III, Type V, VB	
<b>Rated voltage</b>	230-240 V, 50 Hz	
<b>Pmax</b>	max. 104 W	max. 175 W
<b>Protection</b>	overvoltage, overcurrent and overheating	